

Tanzsammlung Dahlhoff

Die "Tanzsammlung Dahlhoff" ist eine Notenhandschrift, die sich in der "Staatsbibliothek zu Berlin - Preußischer Kulturbesitz" befindet. Sie stammt eigentlich aus dem kleinen Kirchspiel Dinker in der Soester Börde (Kreis Welver). Zwischen 1767 bis 1799 wurde sie in der Küster- und Organistenfamilie Dahlhoff aufgeschrieben.

Wir haben es einer Gruppe von Folkmusikern zu verdanken, dass die 10 Büchlein (plus einiger loser Blätter) digitalisiert wurden. Die Staatsbibliothek stellt die [Abbildungen der Handschriften](#) unter der [Creative Commons Lizenz „Namensnennung / Keine kommerzielle Nutzung / Weitergabe unter gleichen Bedingungen 3.0 Deutschland“](#) jedermann zur Verfügung.

Aus Neugier habe ich mich durch die Bände gewühlt und sie dabei in moderne Notenschrift transkribiert. Dabei hatte ich natürlich auch die Hoffnung schöne Stücke für unsere Band Wüdneks Erben zu finden. Ich habe mich bemüht die Stücke so zu übertragen, dass sie dem Original weitgehend entsprechen, aber andererseits heutigen Lesegewohnheiten entgegen kommen.

Transkription

Im Original gibt es keine Voltenklammern, die sind z.T. aber nötig um das richtige Taktmaß zu erreichen. Manchmal habe ich sie auch eingesetzt um die Schreibweise zu verkürzen (mit 1.-3. und 2.-4. Klammer...). Außerdem war es manchmal nötig Noten zu verlängern oder zu verkürzen um die richtige Taktlänge zu erreichen. Diese Änderungen sind nicht im einzelnen angegeben, aber man kann es leicht in den Originalnoten nachlesen. Den Blick in die Originale möchte ich ausdrücklich empfehlen!

Von den Spielanweisungen habe ich nur die Triller übernommen. Bindebögen oder Phrasierungen sowie Da Capo-Angaben etc. wurden nicht übernommen.

Einige Stücke enden im Original am Ende der Seite mitten im Stück, das dann auf der nächsten Seite nicht weiter geht. Manchmal fehlen auch Noten, mal durch die Digitalisierung (geknickte Seiten), einen Tintenfleck, mehrfach verbessertes und damit nicht mehr leserliches... (Falls jemand die Noten rauslesen kann, so füge ich sie gerne ein). In dieser Transkription sind Stücke immer vollständig auf einer Seite notiert, man muss also nicht umblättern.

Ein früherer Bearbeiter des Originals hat alle Bände und Seiten durchnummeriert (außer dem 4. Band, der eine etwas andere Zählweise hat, siehe dort). Ich nutze für die Stücke die Nummern auf dem Blatt und *a, b, c* für die Reihenfolge von oben nach unten. *I, 27b* bezeichnet also das 2. Stück auf Seite 27 im 1. Band.

Auf Variationen desselben Stücks wird jeweils durch *vgl.* und Angabe der Stücknummer verwiesen. Sollte ein Stück tatsächlich genau gleich (oder lediglich in einer anderen Tonart) nochmal vorkommen so ist das mit einem = angegeben. Soweit bekannt und vorhanden sind an den Stücken weitere Stimmen (*Secondo*, *Bass*) als Verweis angegeben. In meiner Transkription überspringe ich *Secondo* und *Bass* an ihren Originalpositionen. Stattdessen gibt es separate Bände, in denen die mehrstimmigen Stücke notiert sind. Die Verweise sind so sortiert, dass oben die *Secondos* (*Sec*) und *Bass* stehen und drunter die Vergleiche (*vgl. / =*).

Die Veröffentlichung dieser Bearbeitung erfolgt ebenfalls unter der oben aufgeführten Lizenz.

Ich hoffe, dass hierdurch diese Musik vielen Musikern leichter zugänglich wird.

Spielt die Stücke und spielt mit ihnen, findet eure Lieblingsmelodien und bearbeitet sie, damit diese Musik lebendig bleibt!

Polnischer Tanz

I, 1

Two staves of musical notation for a Polnischer Tanz in G major, 3/4 time. The first staff contains the main melody, and the second staff contains the accompaniment. The piece consists of two measures.

Menuet

I, 2

= VIII, 149

10 + 20
Takte

Three staves of musical notation for a Menuet in G major, 3/4 time. The first staff contains the main melody, and the second and third staves contain the accompaniment. The piece consists of 30 measures (10 + 20).

Menuet

I, 3

10 + 24
Takte

Three staves of musical notation for a Menuet in G major, 3/4 time. The first staff contains the main melody, and the second and third staves contain the accompaniment. The piece consists of 34 measures (10 + 24). Trills are indicated in the final measures.

Menuet

I, 4

vgl. G.Ph.Telemann (1681-1767)

8 + 20
Takte

Three staves of musical notation for a Menuet in G major, 3/4 time. The first staff contains the main melody, and the second and third staves contain the accompaniment. The piece consists of 28 measures (8 + 20).

Allemande

I, 5

vgl. André Campra (1660-1744)

8 + 12
Takte

Three staves of musical notation for an Allemande in G major, common time. The first staff contains the main melody, and the second and third staves contain the accompaniment. The piece consists of 20 measures (8 + 12). Trills are indicated in the final measures.

Menuet

I, 6

8 + 16
Takte

Musical score for Menuet I, 6, consisting of three staves. The first staff begins with a treble clef, a key signature of one flat (B-flat), and a 3/4 time signature. The piece is marked with a repeat sign and a first ending bracket. The second and third staves continue the melody and accompaniment.

Operatanz

I, 7

4 + 8
Takte

Musical score for Operatanz I, 7, consisting of three staves. The first staff begins with a treble clef, a key signature of one flat (B-flat), and a 3/4 time signature. The piece is marked with a repeat sign and a first ending bracket. The second and third staves continue the melody and accompaniment, with a triplet of eighth notes in the third staff.

Menuet

I, 8

10 + 20
Takte

Musical score for Menuet I, 8, consisting of three staves. The first staff begins with a treble clef, a key signature of two sharps (D major), and a 3/4 time signature. The piece is marked with a repeat sign and a first ending bracket. The second and third staves continue the melody and accompaniment.

Tanz

I, 9a

Musical score for Tanz I, 9a, consisting of two staves. The first staff begins with a treble clef, a key signature of two sharps (D major), and a 3/4 time signature. The piece is marked with a repeat sign and first/second endings. The second staff continues the melody and accompaniment, featuring a trill (tr) and first/second endings.

Tripel

I, 9b

Musical score for Tripel I, 9b, consisting of one staff. The first staff begins with a treble clef, a key signature of two sharps (D major), and a 3/4 time signature. The piece is marked with a repeat sign and first/second endings, and includes trills (tr).

Menuet

I, 10

8 + 18
Takte

Musical score for Menuet I, 10, consisting of three staves. The first staff begins with a treble clef, a key signature of two sharps (D major), and a 3/4 time signature. The piece is marked with a repeat sign and a first ending bracket. The second and third staves continue the melody and accompaniment.

Menuet
I, 11

8 + 16
Takte

Musical score for Menuet I, 11. The score is written in treble clef with a key signature of one sharp (F#) and a 3/4 time signature. It consists of two systems of two staves each. The first system includes first and second endings. The piece is 8 + 16 measures long.

Menuet
I, 12

8 + 16
Takte

Musical score for Menuet I, 12. The score is written in treble clef with a key signature of one sharp (F#) and a 3/4 time signature. It consists of two systems of two staves each. The piece is 8 + 16 measures long.

Menuet
I, 13

8 + 18
Takte

Musical score for Menuet I, 13. The score is written in treble clef with a key signature of one sharp (F#) and a 3/4 time signature. It consists of three systems of two staves each. The piece is 8 + 18 measures long.

Menuet
I, 14

8 + 16
Takte

Musical score for Menuet I, 14. The score is written in treble clef with a key signature of two sharps (F# and C#) and a 3/4 time signature. It consists of two systems of two staves each. The piece is 8 + 16 measures long.

Menuet
I, 15

8 + 16
Takte

Musical score for Menuet I, 15. The score is written in treble clef with a key signature of two sharps (F# and C#) and a 3/4 time signature. It consists of two systems of two staves each. The piece is 8 + 16 measures long.

Menuet
I, 16

Musical score for Menuet I, 16. The score is written in treble clef with a key signature of one sharp (F#) and a 3/4 time signature. It consists of two systems of two staves each. The piece is 8 + 16 measures long.

Menuet

I, 17

8 + 16
Takte

Musical score for Menuet I, 17. The piece is in G major (one sharp) and 3/4 time. It consists of 24 measures, divided into an 8-measure first section and a 16-measure second section. The notation is presented in three staves: the first staff contains the first 8 measures, and the second and third staves contain the remaining 16 measures. The piece concludes with a double bar line and repeat dots.

Menuet

I, 18_19

8 + 20
Takte

Musical score for Menuet I, 18_19. The piece is in G major (one sharp) and 3/4 time. It consists of 28 measures, divided into an 8-measure first section and a 20-measure second section. The notation is presented in four staves: the first staff contains the first 8 measures, and the second, third, and fourth staves contain the remaining 20 measures. The second section includes first and second endings, indicated by bracketed lines and numbers 1 and 2. The piece concludes with a double bar line and repeat dots.

Menuet

I, 20

8 + 18
Takte

Musical score for Menuet I, 20. The piece is in G major (one sharp) and 3/4 time. It consists of 26 measures, divided into an 8-measure first section and an 18-measure second section. The notation is presented in three staves: the first staff contains the first 8 measures, and the second and third staves contain the remaining 18 measures. The piece concludes with a double bar line and repeat dots.

Menuet

I, 21

9 + 12
Takte

Musical score for Menuet I, 21. The piece is in G major (one sharp) and 3/4 time. It consists of 21 measures, divided into a 9-measure first section and a 12-measure second section. The notation is presented in three staves: the first staff contains the first 9 measures, and the second and third staves contain the remaining 12 measures. The piece concludes with a double bar line and repeat dots.

Menuet

I, 22

8 + 20
Takte

Musical score for Menuet I, 22, 8 + 20 Takte. The piece is in 3/4 time and B-flat major. It features a first ending (1.) and a second ending (2.). A trill (tr) is marked above the final note of the first ending.

Menuet

I, 23

8 + 16
Takte

Musical score for Menuet I, 23, 8 + 16 Takte. The piece is in 3/4 time and B-flat major. It consists of two systems of music.

Menuet

I, 24

8 + 16
Takte

Musical score for Menuet I, 24, 8 + 16 Takte. The piece is in 3/4 time and D major. It consists of two systems of music.

Men.

I, 25

Musical score for Men. I, 25. The piece is in 3/4 time and D major. It features a triplet (3) in the final measure of the second system.

Menuet

I, 26a

vgl. IV, 7vb; VII, 3a; VII, 92 ohne Trio

Musical score for Menuet I, 26a. The piece is in 3/4 time and D major. It features triplet (3) markings in the first and second systems.

Menuet

I, 26b

Musical score for Menuet I, 26b. The piece is in 3/4 time and D major. It consists of two systems of music.

Menuet
I, 27a

Musical score for Menuet I, 27a, in G major and 3/4 time. The score consists of two staves. The first staff contains the melody with several triplet markings. The second staff contains the accompaniment, featuring chords and triplet markings.

Menuet
I, 27b

Musical score for Menuet I, 27b, in G major and 3/4 time. The score consists of two staves. The first staff contains the melody. The second staff contains the accompaniment, featuring chords and triplet markings.

Menuet
I, 28a

Musical score for Menuet I, 28a, in G major and 3/4 time. The score consists of two staves. The first staff contains the melody with several triplet markings. The second staff contains the accompaniment, featuring chords and triplet markings.

wahrscheinlich Trio
I, 28b

Musical score for wahrscheinlich Trio I, 28b, in G major and 3/4 time. The score consists of two staves. The first staff contains the melody with a trill marking. The second staff contains the accompaniment, featuring chords and triplet markings.

Polonese
I, 29

8 + 6
4 + 4
Takte

Musical score for Polonese I, 29, in G major and 3/4 time. The score consists of four staves. The first two staves contain the main melody with a repeat sign and asterisks. The last two staves contain a variation of the melody, also marked with asterisks. The text 'vgl. III, 102 Teile B, C' is written to the right of the score.

Marsch
I, 30

10 + 10
Takte

Musical score for Marsch I, 30, in G major and 2/4 time. The score consists of three staves. The first staff contains the main melody. The second and third staves contain variations of the melody, with the third staff featuring triplet markings. The text 'diese Variation ist mit blau eingemalt' is written to the right of the score.

Marsch
I, 31

13 + 24
Takte

Musical score for March I, 31, consisting of five staves of music in G major and 3/4 time. The score includes a triplet of eighth notes on the first staff and another triplet on the fourth staff. The piece concludes with a double bar line and repeat dots.

Menuet
I, 32

8 + 24
Takte

Musical score for Minuet I, 32, consisting of four staves of music in G major and 3/4 time. The score features two first and second endings, marked '1.' and '2.', in the first staff. The piece concludes with a double bar line and repeat dots.

Menuet
I, 33a

8 + 10
Takte

Musical score for Minuet I, 33a, consisting of two staves of music in G major and 3/4 time. The score includes an accent (*h*) on the final note of the first staff and a trill (*tr*) on the second staff. The piece concludes with a double bar line and repeat dots.

vgl. II, 64

Menuet
I, 33b

Musical score for Minuet I, 33b, consisting of two staves of music in G major and 3/4 time. The score includes a grace note (*g*) on the second staff. The piece concludes with a double bar line and repeat dots.

Menuet
I, 34

Musical score for Minuet I, 34, consisting of two staves of music in G major and 3/4 time. The score includes an accent (*h*) on the first note of the second staff. The piece concludes with a double bar line and repeat dots.

Menuet

I, 35

Musical score for Menuet I, 35. It consists of two staves of music in G major (one sharp) and 3/4 time. The first staff contains the main melody, and the second staff contains the bass line. The piece ends with a repeat sign and a final cadence.

Menuet

I, 36

8 + 12
Takte

Musical score for Menuet I, 36. It consists of two staves of music in G major (one sharp) and 3/4 time. The first staff contains the main melody, and the second staff contains the bass line. The piece is marked with a repeat sign and a final cadence.

Menuet

I, 37

10 + 10
Takte

Musical score for Menuet I, 37. It consists of two staves of music in G major (one sharp) and 3/4 time. The first staff contains the main melody with trills (tr) indicated above several notes. The second staff contains the bass line. The piece ends with a repeat sign and a final cadence.

Men. con Trio

I, 38

8 + 10
8 + 8
Takte

Sec VI, 62a + VIII, 16b (ohne Trio)
vgl. VIII, 16a + XI, 26d (ohne Trio); vgl. VIII, 5 (mit Trio)

Musical score for Men. con Trio I, 38. It consists of four staves of music in G major (one sharp) and 3/4 time. The first two staves form the main melody and bass line. The third and fourth staves are labeled 'Trio' and provide a harmonic accompaniment. The piece ends with a repeat sign and a final cadence.

Menuet

I, 39a

Musical score for Menuet I, 39a. It consists of two staves of music in G major (one sharp) and 3/4 time. The first staff contains the main melody, and the second staff contains the bass line. The piece ends with a repeat sign and a final cadence.

Men

I, 39b

Sec VI, 20b

Musical score for Men I, 39b. It consists of two staves of music in G major (one sharp) and 3/4 time. The first staff contains the main melody, and the second staff contains the bass line. The piece ends with a repeat sign and a final cadence.

Menuet

I, 40

Two staves of musical notation for Menuet I, 40. The key signature is one sharp (F#) and the time signature is 3/4. The piece consists of two systems, each with a treble clef staff and a bass clef staff. The first system ends with a repeat sign, and the second system also ends with a repeat sign.

Men.

I, 41a

Two staves of musical notation for Men. I, 41a. The key signature is one sharp (F#) and the time signature is 3/4. The piece consists of two systems, each with a treble clef staff and a bass clef staff. The first system ends with a repeat sign, and the second system also ends with a repeat sign.

Polnis

I, 41b

Two staves of musical notation for Polnis I, 41b. The key signature is one sharp (F#) and the time signature is 3/4. The piece consists of two systems, each with a treble clef staff and a bass clef staff. The first system ends with a repeat sign, and the second system also ends with a repeat sign.

Men.

I, 42_43

8 + 12
Takte

Three staves of musical notation for Men. I, 42_43. The key signature is one sharp (F#) and the time signature is 3/4. The piece consists of three systems, each with a treble clef staff and a bass clef staff. The first system ends with a repeat sign. The second system ends with a first ending bracket labeled '1.' and a second ending bracket labeled '2.'. The third system ends with a repeat sign.

Men.

I, 44_45

8 + 20
Takte

Three staves of musical notation for Men. I, 44_45. The key signature is one sharp (F#) and the time signature is 3/4. The piece consists of three systems, each with a treble clef staff and a bass clef staff. The first system ends with a repeat sign. The second system ends with a repeat sign. The third system ends with a repeat sign.

Tantz

I, 46a

vgl. VI, 17a; VIII, 64a; VIII, 123b

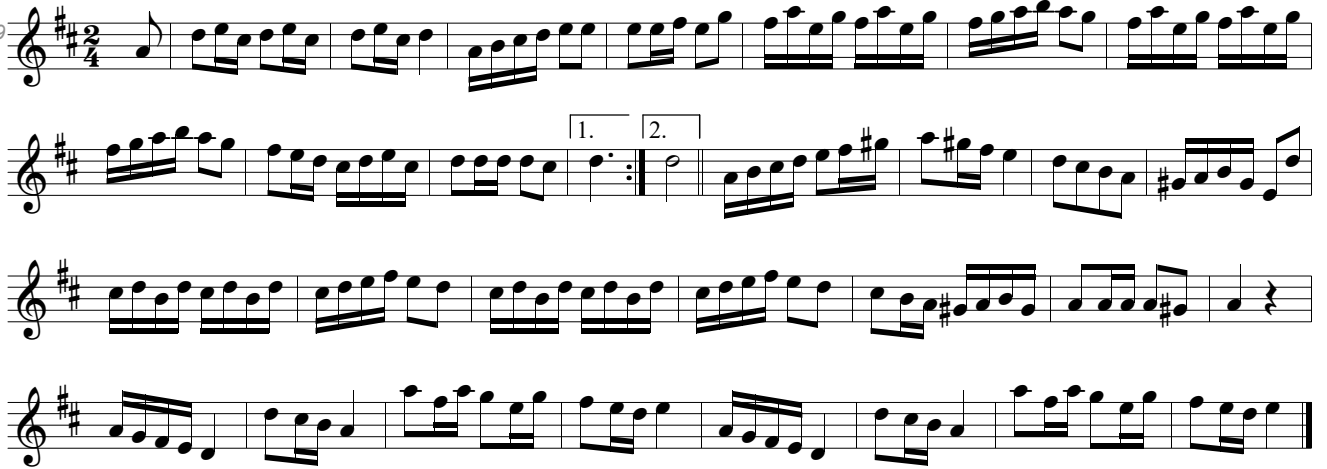
Two staves of musical notation for Tantz I, 46a. The key signature is one sharp (F#) and the time signature is 2/4. The piece consists of two systems, each with a treble clef staff and a bass clef staff. The first system ends with a repeat sign, and the second system also ends with a repeat sign.

Tanz
I, 46b



March
I, 47

11 + 19
Takte

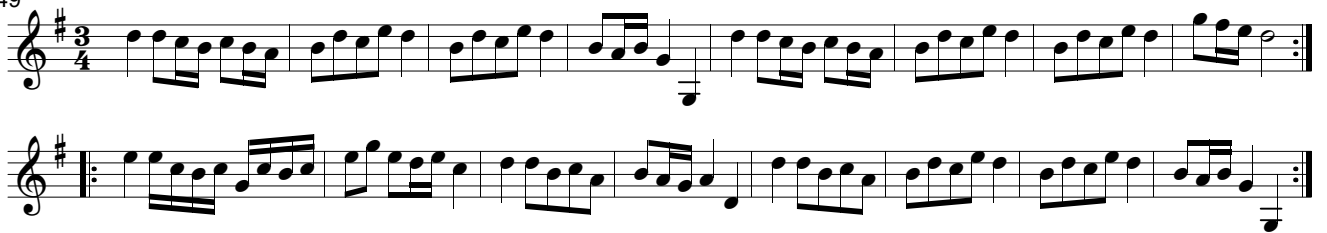


A Mabel mun köre
I, 48

"Aimable Vainqueur", Oper "Hésione", André Campra, 1700



Polonese
I, 49

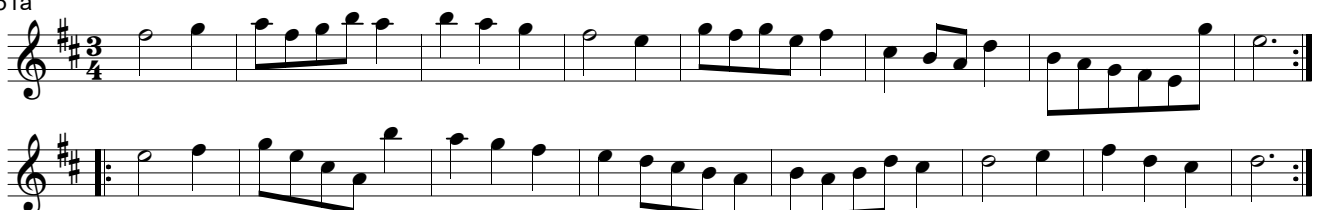


Men:
I, 50

8 + 16
Takte



Men:
I, 51a



Tanz
I, 51b

6 + 6
Takte



Men: imo
I, 52

Sec I, 53 = VI, 68a



Menuet Neun Compa:

I, 54

vgl. I, 82b



Polonese

I, 55

4 + 4 + 6
Takte



Men. Con Trio

I, 56



Men.

I, 57

12 + 18
Takte



Men.
I, 58a

Musical notation for Men. I, 58a, 3/4 time, key of D major. The piece consists of two systems of two staves each. The first system includes first and second endings. The second system also includes first and second endings.

Men.
I, 58b

Musical notation for Men. I, 58b, 3/4 time, key of D major. The piece consists of two systems of two staves each. A triplet of eighth notes is marked in the first measure of the first system.

Men.
I, 59

Musical notation for Men. I, 59, 3/4 time, key of D major. The piece consists of three systems of two staves each. The first system is labeled '8 + 16 Takte'. A triplet of eighth notes is marked in the first measure of the third system.

Menuet
I, 60a

Musical notation for Menuet I, 60a, 3/4 time, key of D major. The piece consists of two systems of two staves each.

Boure
I, 60b

vgl. Ein guter Bairischer Bawrentanz, Heckels Lautenbuch 1562

Musical notation for Boure I, 60b, 3/4 time, key of D major. The piece consists of two systems of two staves each. First and second endings are marked in both systems.

Men:
I, 61

Musical notation for Men: I, 61, 3/4 time, key of D major. The piece consists of three systems of two staves each. The first system is labeled '12 + 16 Takte'.

Tantz
I, 62

Musical notation for Tantz I, 62, 2/4 time, key of D major. The piece consists of three systems of two staves each. The first system is labeled '10 + 19 Takte'.

Menuet
I, 63

8 + 16 + 3
Takte

Musical score for Menuet I, 63, in G major, 3/4 time. The score consists of three staves. The first staff begins with a treble clef, a key signature of one sharp (F#), and a 3/4 time signature. The piece is marked with a repeat sign and a first ending. The second and third staves continue the melody and accompaniment.

Menuet Con Trio
I, 64

Musical score for Menuet Con Trio I, 64, in G major, 3/4 time. The score consists of four staves. The first staff begins with a treble clef, a key signature of one sharp (F#), and a 3/4 time signature. The piece features a Trio section starting on the third staff. There are triplets indicated by a '3' below the notes. The score ends with a repeat sign and a first ending.

Menuet La Schene
I, 65

Sec VI, 102
vgl. VIII, 143

Musical score for Menuet La Schene I, 65, in G minor, 3/4 time. The score consists of two staves. The first staff begins with a treble clef, a key signature of one flat (F), and a 3/4 time signature. The piece features a first ending and a second ending marked with '1.' and '2.'.

Fetzzier Menuet
I, 66a

Sec VI, 101
vgl. VIII, 141

8 + 4
Takte

Musical score for Fetzzier Menuet I, 66a, in G minor, 3/4 time. The score consists of two staves. The first staff begins with a treble clef, a key signature of one flat (F), and a 3/4 time signature. The piece features a first ending and a second ending.

Men:
I, 66b

Musical score for Men: I, 66b, in G minor, 3/4 time. The score consists of two staves. The first staff begins with a treble clef, a key signature of one flat (F), and a 3/4 time signature. The piece features a first ending and a second ending.

Menuet Con Trio

I, 67

8 + 8
8 + 16
Takte

Sch...

I, 68a

Menuet

I, 68b

10 + 14...
Takte

March

I, 69

9 + 9
Takte

Men:

I, 70

Menuet

I, 71

8 + 17
Takte

Musical score for Menuet I, 71, in G major and 3/4 time. The piece consists of three staves of music. The first staff begins with a treble clef, a key signature of one sharp (F#), and a 3/4 time signature. The melody is characterized by a series of eighth and sixteenth notes, with a repeat sign at the end of the first line. The second and third staves continue the melodic line, featuring various rhythmic patterns and a final cadence.

Men

I, 72

10 + 18
Takte

Musical score for Men I, 72, in G major and 3/4 time. The piece consists of three staves of music. The first staff begins with a treble clef, a key signature of one sharp (F#), and a 3/4 time signature. The melody is characterized by a series of eighth and sixteenth notes, with a repeat sign at the end of the first line. The second and third staves continue the melodic line, featuring various rhythmic patterns and a final cadence.

Menuet

I, 73

8 + 14
Takte

Musical score for Menuet I, 73, in G major and 3/4 time. The piece consists of three staves of music. The first staff begins with a treble clef, a key signature of one sharp (F#), and a 3/4 time signature. The melody is characterized by a series of eighth and sixteenth notes, with a repeat sign at the end of the first line. The second and third staves continue the melodic line, featuring various rhythmic patterns and a final cadence. The score includes first and second endings, indicated by '1.' and '2.' above the notes.

Pol.tantz

I, 74

8 + 10
Takte

Musical score for Pol.tantz I, 74, in G major and 2/4 time. The piece consists of two staves of music. The first staff begins with a treble clef, a key signature of one sharp (F#), and a 2/4 time signature. The melody is characterized by a series of eighth and sixteenth notes, with a repeat sign at the end of the first line. The second staff continues the melodic line, featuring various rhythmic patterns and a final cadence.

Menuet

I, 75

10 + 20
Takte

Musical score for Menuet I, 75, in G major and 3/4 time. The piece consists of three staves of music. The first staff begins with a treble clef, a key signature of one sharp (F#), and a 3/4 time signature. The melody is characterized by a series of eighth and sixteenth notes, with a repeat sign at the end of the first line. The second and third staves continue the melodic line, featuring various rhythmic patterns and a final cadence.

Pol.
I, 76

vgl. Opera Seria "Cleofide", J.J. Hasse 1731
vgl. I, 142a; II, 52b; V, 4a; VII, 18a; VII, 56b; VIII, 170a; X, 30b
Sec IV, 34rb; X, 31b; Bass III, 96b

Menuet

I, 77a

Menuet

I, 77b

Sec VI, 36b; X, 35b; Bass B-Teil III, 94
= I, 140b; II, 58a; V, 3a; VII, 20b; VII, 57b; VIII, 174b; X, 34a; X, 84a; XI, 26b

Menuet 1

I, 78a

Men. 2

I, 78b

Sec passt nicht ganz Sec VI, 34b
= II, 58b

Men.

I, 80a

10 + 12
Takte

Men.
I, 80b

Two staves of music in G major and 3/4 time. The first staff contains a melodic line with eighth and sixteenth notes. The second staff contains a bass line with triplets of eighth notes.

Men:
I, 81a

One staff of music in G major and 3/4 time, featuring a melodic line with a trill (tr) on the final note.

Men:
I, 81b

8 + 10
Takte

Two staves of music in G major and 3/4 time. The first staff contains a melodic line with eighth notes. The second staff contains a bass line with eighth notes.

Tanz

I, 82a

4 + 10
Takte

Two staves of music in G major and 3/4 time. The first staff contains a melodic line with eighth notes and a triplet. The second staff contains a bass line with eighth notes.

Men: Neun Comp:

I, 82b

vgl. I, 54

8 + 7 + ...
Takte

Two staves of music in G major and 3/4 time. The first staff contains a melodic line with eighth notes. The second staff contains a bass line with eighth notes and a triplet. A 'fehlt' (missing) note is indicated in the second staff.

Bure

I, 83a

Sec VI, 65a

Two staves of music in G major and 2/4 time. The first staff contains a melodic line with eighth notes. The second staff contains a bass line with eighth notes.

Bure

I, 83b

Sec VI, 65b
= VII, 74a; IX, 34; XI, 3d

Two staves of music in G major and 2/4 time. The first staff contains a melodic line with eighth notes. The second staff contains a bass line with eighth notes.

Pol

I, 84

15 Takte

Two staves of music in G major and 3/4 time. The first staff contains a melodic line with eighth notes. The second staff contains a bass line with eighth notes.

Conter Dantz
I, 85a

Sesken
I, 85b

Sesken *ach mein Schatz ist wieder kommen*
I, 86a

6 + 3
Takte

Pol:

I, 86b

Vier Winde

I, 87a

Sec VI, 90
VIII, 144

Die Voltenklammern gibt es bei Dh nicht, scheinen aber logisch. Bei Böhme ist Vier Winde vermerkt mit 8 + 6 Takt...

= VIII, 169b; VIII, 189b

Baur Schon

I, 87b

6 + 6
Takte

Sesken

I, 88a

8 + 12
Takte

vgl. I, 96a; VII, 167a; VIII, 139

Tantz

I, 88b

8 + 9
Takte

Jedenfalls fehlt ein Takt mit D.

Wonke Dantz Sesken

I, 89a

8 + 12
Takte

Kikebus

I, 89b

Sec VI, 96b
vgl. VII, 168a, VIII, 121

Schwinsluhnis Sesken

I, 90

8 + 12
Takte

vgl. Adeste fidelis, John F. Wade (1711-1786)
Sec. VI, 93
= VIII, 119b

Sesken

I, 91a

8 + 14
Takte

pistolent

I, 91b

Capelahn

I, 92a

Sec VI, 88a

Harlekin Sesken

I, 92b

8 + 13
Takte

Men:
I, 93a

10 + 10
Takte

Two staves of musical notation in G major, 3/4 time. The first staff contains two measures of music, and the second staff contains two measures. The piece consists of two 10-measure phrases.

Men:
I, 93b

12 + 12
Takte

Three staves of musical notation in G major, 3/4 time. The first staff contains two measures with triplets, and the second and third staves each contain two measures. The piece consists of two 12-measure phrases.

Sesken
I, 94a

4 + 8
Takte

Two staves of musical notation in G major, 3/4 time. The first staff contains two measures, and the second staff contains two measures. The piece consists of two 8-measure phrases.

Sesken
I, 94b

5 + 6
Takte

Two staves of musical notation in G major, 3/4 time. The first staff contains two measures, and the second staff contains two measures. The piece consists of two 6-measure phrases.

Sesken
I, 95a

4 + 8
Takte

Two staves of musical notation in G major, 2/4 time. The first staff contains two measures with a triplet, and the second staff contains two measures. The piece consists of two 8-measure phrases.

Sesken
I, 95b

4 + 8
Takte

Two staves of musical notation in G major, 2/4 time. The first staff contains two measures, and the second staff contains two measures. The piece consists of two 8-measure phrases.

Sesken
I, 96a

8 + 12
Takte

Two staves of musical notation in G major, 2/4 time. The first staff contains two measures, and the second staff contains two measures. The piece consists of two 12-measure phrases.

vgl. I, 88a; VII, 167a; VIII, 139

Schuster Sesken

I, 96b

Two staves of musical notation for 'Schuster Sesken'. The first staff is in treble clef with a key signature of one sharp (F#) and a common time signature (C). The second staff is in bass clef with the same key signature and time signature. The music consists of a series of eighth and sixteenth notes, with some rests and a repeat sign at the end of the first staff.

Tantz

I, 97

= VIII, 145

8 + 18
Takte

Three staves of musical notation for 'Tantz'. The first staff is in treble clef with a key signature of two flats (Bb, Eb) and a common time signature (C). The second and third staves are in bass clef with the same key signature and time signature. The music features a mix of eighth and sixteenth notes, with a triplet of eighth notes in the second staff and a repeat sign at the end of the third staff.

Klumpen Tantz

I, 98

10 + 18
Takte

Three staves of musical notation for 'Klumpen Tantz'. The first staff is in treble clef with a key signature of one sharp (F#) and a common time signature (C). The second and third staves are in bass clef with the same key signature and time signature. The music consists of eighth and sixteenth notes, with first and second endings marked at the end of the first and third staves.

Englisch ConterTantz

I, 99

8 + 10
8 + 8
Takte

Four staves of musical notation for 'Englisch ConterTantz'. The first staff is in treble clef with a key signature of one sharp (F#) and a common time signature (C). The second, third, and fourth staves are in bass clef with the same key signature and time signature. The music features a mix of eighth and sixteenth notes, with a triplet of eighth notes in the fourth staff and a repeat sign at the end of the first staff.

Paulus zu Pferde

I, 100a

Two staves of musical notation for 'Paulus zu Pferde'. The first staff is in treble clef with a key signature of one sharp (F#) and a common time signature (C). The second staff is in bass clef with the same key signature and time signature. The music consists of eighth and sixteenth notes, with a triplet of eighth notes in the second staff and a repeat sign at the end of the first staff.

Schartlusie

I, 100b

"Jalousie", Raoul Auger Feuillet (1653 - 1709)

Klapperman

I, 101

...

I, 102a

Fechten Tanz

I, 102b

Englisch Conterdantz

I, 103a

7 + 11
Takte

Tantz

I, 103b

Frantze Quadrat

I, 104a

Tanz
I, 104b



Tanz ex C #
I, 105

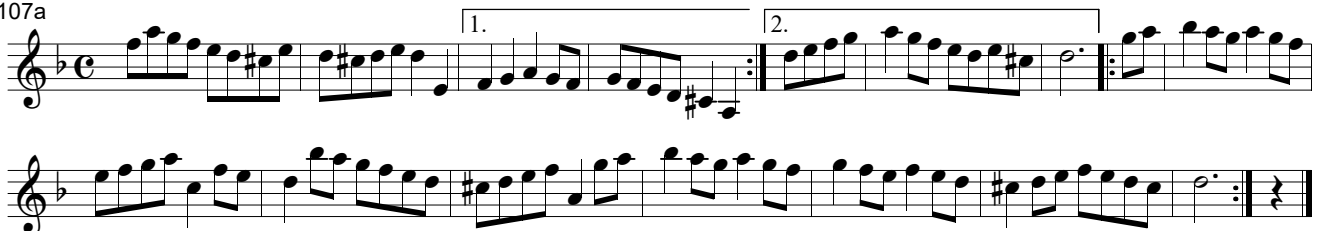
8 + 16 + 4
Takte



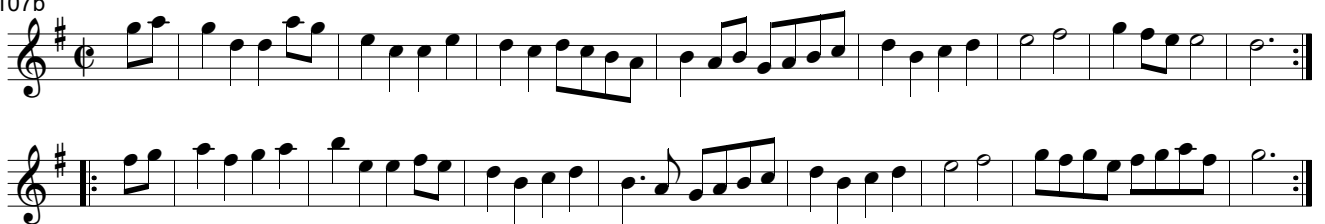
Rode See
I, 106



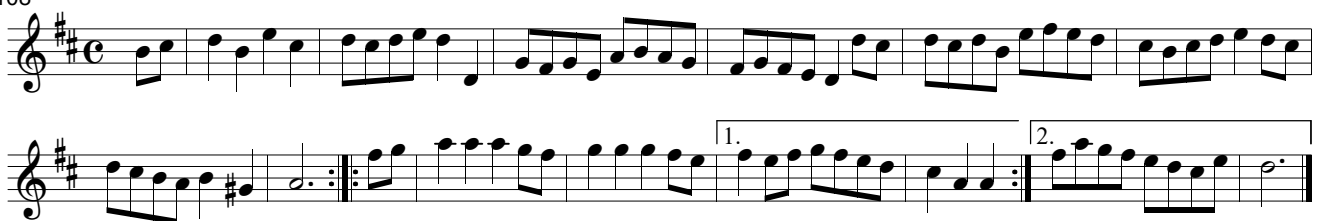
Tanz
I, 107a



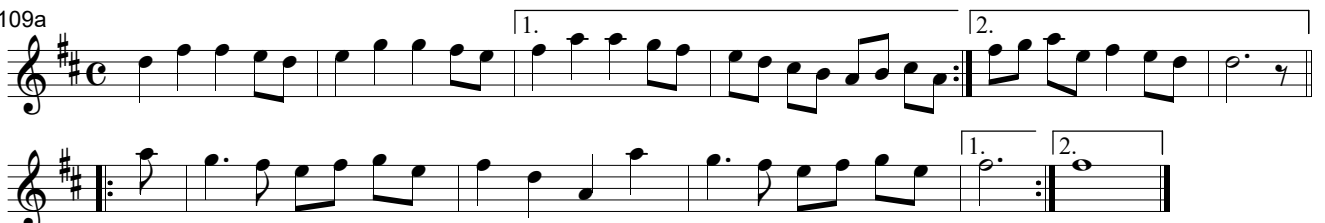
Englisch Offerja
I, 107b



Junge printz von Frisland
I, 108



Tanz
I, 109a



Tanz ex A #

I, 109b

Menuet 1

I, 110

12 + 10
Takte

2. Boure

I, 111

8 + 12
Takte

Sec VI, 12

Beyrisch 3

I, 112a

8 + 4
Takte

= VIII, 4b; VIII, 34b; vgl. VIII, 72b

Pol.

I, 112b

Sec IV, 32va

vgl I, 136

Menuet

I, 113a

8 + 10
Takte

Bayerisch

I, 113b

Sec IV, 32vb

= II, 49b; V, 41a; VII, 64b

Men.
I, 114a

8 + 10
Takte



Bure
I, 114b



Boure
I, 115

10 + 11
Takte



Boure
I, 116a

7 + 8
Takte



Boure
I, 116b



Men.
I, 117

8 + 16
Takte



Menuet
I, 118

10 + 20
Takte

Musical score for Menuet I, 118, measures 1-20. The piece is in G major (one sharp) and 3/4 time. It consists of two systems of two staves each. The first system contains measures 1-10, and the second system contains measures 11-20. The music features a mix of eighth and sixteenth notes, with a repeat sign at the end of the second system.

Menuet
I, 118

Musical score for Menuet I, 118, measures 21-30. This system continues the piece from the previous system. It contains two systems of two staves each, covering measures 21-30. Trills (tr) are indicated above several notes in measures 24, 27, and 29.

Menuet
I, 119

Musical score for Menuet I, 119, measures 1-10. The piece is in G major (one sharp) and 3/4 time. It consists of two systems of two staves each, covering measures 1-10. The music is characterized by a steady eighth-note pattern.

Aria
I, 120a

Musical score for Aria I, 120a, measures 1-10. The piece is in G major (one sharp) and 3/4 time. It consists of two systems of two staves each, covering measures 1-10. The melody is primarily composed of quarter and eighth notes.

Allegro Men.
I, 120b

Musical score for Allegro Men. I, 120b, measures 1-10. The piece is in G major (one sharp) and 3/4 time. It consists of two systems of two staves each, covering measures 1-10. The music is more rhythmic, featuring triplets (3) and trills (tr).

Menuet A moll
I, 121

Musical score for Menuet A moll I, 121, measures 1-10. The piece is in F major (no sharps or flats) and 3/4 time. It consists of two systems of two staves each, covering measures 1-10. The music features a mix of eighth and sixteenth notes, with a trill (tr) in measure 5.

Menuet Con Trio
I, 122

3

tr

3

3

Trio

3

Polonäse
I, 123

Menuet
I, 124a

8 + 10
Takte

Menuet
I, 124b

tr

Menuet
I, 125

tr

3

Menuet Con Trio

I, 126a 127

8 + 8
8 + 14
Takte

Musical score for Menuet Con Trio, I, 126a 127. The piece is in 3/4 time and D major. It consists of two systems of two staves each. The first system includes a treble clef staff with a key signature of one sharp and a 3/4 time signature. The second system includes a bass clef staff with a key signature of one sharp. The score features several triplet markings (3) and first/second ending brackets (1., 2.).

6cken

I, 126b

6 + 8
Takte

Musical score for 6cken, I, 126b. The piece is in 4/4 time and D major. It consists of two systems of two staves each. The first system includes a treble clef staff with a key signature of one sharp and a 4/4 time signature. The second system includes a bass clef staff with a key signature of one sharp. The score features a trill marking (tr).

Naber Jahan

I, 129a

5 + 7
Takte

Musical score for Naber Jahan, I, 129a. The piece is in 2/4 time and D major. It consists of two systems of two staves each. The first system includes a treble clef staff with a key signature of one sharp and a 2/4 time signature. The second system includes a bass clef staff with a key signature of one sharp.

Gosswin

I, 129b

Musical score for Gosswin, I, 129b. The piece is in 2/4 time and D major. It consists of two systems of two staves each. The first system includes a treble clef staff with a key signature of one sharp and a 2/4 time signature. The second system includes a bass clef staff with a key signature of one sharp.

Drill Sescken

I, 130a

vgl. V, 38b

4 + 6
Takte

Musical score for Drill Sescken, I, 130a. The piece is in 6/8 time and D major. It consists of two systems of two staves each. The first system includes a treble clef staff with a key signature of one sharp and a 6/8 time signature. The second system includes a bass clef staff with a key signature of one sharp.

Friger Sescken

I, 130b

7 + 10
Takte

Musical score for Friger Sescken, I, 130b. The piece is in 2/4 time and D major. It consists of two systems of two staves each. The first system includes a treble clef staff with a key signature of one sharp and a 2/4 time signature. The second system includes a bass clef staff with a key signature of one sharp. The score features first/second ending brackets (1., 2.).

Daphnus
I, 131

Three staves of music in 3/4 time, key of B-flat major. The first staff has two first endings and a second ending. The second and third staves have first and second endings. The piece concludes with a repeat sign.

March
I, 132

9 + 11
Takte

Three staves of music in common time, key of D major. The first staff has a triplet. The second and third staves have triplets. The piece concludes with a repeat sign.

March
I, 133

10 + 14
Takte

Three staves of music in common time, key of D major. The first staff has a first ending. The second staff has a second ending. The third staff has first and second endings. The piece concludes with a repeat sign.

Menuet Con Trio i.mo
I, 134

Sec I, 135; VI, 15

8 + 12
8 + 8
Takte

Three staves of music in 3/4 time, key of D major. The first staff has two triplets. The second staff has a triplet. The third staff is labeled 'Trio' and has a first ending. The piece concludes with a repeat sign.

Tantz
I, 136

vgl. I, 112b

4 + 10
Takte

Two staves of music in 3/4 time, key of D major. The first staff has a first ending. The piece concludes with a repeat sign.

Corante

I, 137

Two staves of music in G major and 2/4 time. The first staff contains the main melody, and the second staff contains a rhythmic accompaniment with sixteenth-note patterns.

Menuet

I, 138a

Two staves of music in G major and 3/4 time. The first staff contains the main melody, and the second staff contains a rhythmic accompaniment with eighth-note patterns.

Engelische reverentz

I, 138b

Two staves of music in G major and 2/4 time. The first staff contains the main melody, and the second staff contains a rhythmic accompaniment. The piece ends with two first and second endings.

Menuet 1

I, 139a

Two staves of music in G major and 3/4 time. The first staff contains the main melody, and the second staff contains a rhythmic accompaniment with eighth-note patterns.

Menuet 2

I, 139b

Sec VI, 32b; X, 29a
vgl. II, 42b; IV, 11rb; VII, 21b; VII, 61b; VIII, 178a; IX, 1b; X, 28a; XI, 26e

Two staves of music in G major and 3/4 time. The first staff contains the main melody with a triplet of eighth notes at the beginning. The second staff contains a rhythmic accompaniment with eighth-note patterns.

Menuet 3

I, 140a

Two staves of music in G major and 3/4 time. The first staff contains the main melody with several triplet markings. The second staff contains a rhythmic accompaniment with eighth-note patterns.

Menuet 4

I, 140b

Sec VI, 36b; X, 35b; Bass B-Teil III, 94
= I, 78a; II, 58a; V, 3a; VII, 20b; VII, 57b; VIII, 174b; X, 34a; X, 84a; XI, 26b

Two staves of music in G major and 3/4 time. The first staff contains the main melody, and the second staff contains a rhythmic accompaniment with eighth-note patterns.

Menuet 5

I, 141a

Sec VI, 30b; X, 27a
vgl. II, 48a; IV, 10va; VII, 21a; VII, 61a; VIII, 178b; IX, 6b; X, 26a; XI, 26a

Musical score for Menuet 5, I, 141a. The score is in G major and 3/4 time. It consists of two staves. The first staff contains the main melody, and the second staff contains the accompaniment. There are triplets in both staves.

Menuet 6

I, 141b

vgl. IV, 11ra; mit Trio: II, 11; VII, 163; VII, 192; VIII, 1; VIII, 19; XI, 25e

Musical score for Menuet 6, I, 141b. The score is in G major and 3/4 time. It consists of two staves. The first staff contains the main melody, and the second staff contains the accompaniment. There are triplets in both staves.

Menuet 7

I, 142a

vgl. Opera Seria "Cleofide", J.J. Hasse 1731
vgl. I, 77a; II, 52b; V, 4a; VII, 18a; VII, 56b; VIII, 170a; X, 30b
Sec IV, 34rb; X, 31b; Bass III, 96b

Musical score for Menuet 7, I, 142a. The score is in G major and 3/4 time. It consists of two staves. The first staff contains the main melody, and the second staff contains the accompaniment.

Menuet 8

I, 142b

Sec VI, 36a; X, 33b
= II, 60a; VII, 65b; X, 32b; vgl. VIII, 172b; XI, 26c

Musical score for Menuet 8, I, 142b. The score is in G major and 3/4 time. It consists of two staves. The first staff contains the main melody, and the second staff contains the accompaniment. There is a trill in the first staff.